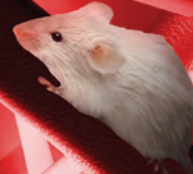


PLAS ■ LABSTM

Small Animal Catalog



CONCEPTION ■ INTERPRETATION ■ PRODUCTION ■ SATISFACTION

Established 1967

“Research by its very nature often means doing that which has not been done before. We work to improve the condition of mankind by offering high-quality, unique research equipment at a fair price.”

—Dave Regan, President

PLAS  LABS™



Animal Hypoxia Unit

T Table of Contents

Intensive Care Units (Touch Screen Controlled)	1-3
Autoclavable Isolation Units	4-11
Portable Isolation Units	6
Poultry Isolators	8-11
Hypoxia Chambers	12
PCR Chambers	13-14
Primate Chairs and Accessories	15-17
Surgery-Exam Tables (Battery Operated)	18
Surgery Equipment	19
Anesthesia (Euthanasia) Chambers	20
Rodent Containment System	21
Rodent Equipment	22-23
“Bowman” Style Rodent Equipment	24
Illuminated Tail Injection Cone	25
Rabbit Equipment	26-27
Ferret Equipment	28
Guinea Pig Equipment	29
Anaerobic Chambers	30-31

I Intensive Care System

Plas ■ Labs offers an Intensive Care System in three configurations. This system goes far beyond the conventional oxygen door and cage unit.

This unit is a self-contained life support system which provides a controlled environment designed to regulate temperature and oxygen levels. These conditions are essential in caring for the critically ill or injured patient. This method of treatment has been proven significant in increasing the likelihood of successful post-operative recovery.

Our units are the only ones available which have been conceptualized and designed from the ground up for animal intensive care use. Grounded casters included for O₂ work.

Since their introduction in 1970, these Intensive Care Units have been selected by nearly every major veterinary school, U.S. government research facility, pharmaceutical testing laboratory, and many progressive private veterinary clinics. They have been shipped all over the world.

NEW EASY-TO-USE TOUCH-SCREEN DISPLAY!



ICS-I/TS

“Touch Screen” Controlled!

Intensive Care Components

This advanced system is a PLAS ■ LABS exclusive.



Controls

Did You Know?

The air we breathe is only 20.9% oxygen (O₂). The rest of our air is comprised of other gases such as Nitrogen (N₂).

The Advanced Self Contained Environment

Features of The ICS Systems

- Each unit is enclosed within stainless steel for durability, ease of cleaning, and sanitation.
- Metabolism/Waste Pan
- Plastic Coated False Floor
- HEPA Filtration Systems with Magnehelic™ Gauge
- The entire unit is mounted on a steel frame for structural integrity.
- The animal compartment is a separate unit attached to the frame which provides for replacement should the cage be damaged.
- Heavy duty stainless steel grounded casters with brakes, locks, and zerk fittings are standard.
- Operators' manual and standard 12 month warranty.

Performance Specifications

- Animal capacity - up to 125 pounds (ICS-I)
- Cage temperature - variable from 55 to 120 degrees F
- Temperature accuracy - plus/minus 2 degrees F
- Air change rate - 1 cage volume/minute
- CO2 absorption capacity - 24 hours
- Temperature stabilization - approximately 15 minutes heat/20 minutes cool
- Humidity can be increased, but not reduced.
- Power requirements 120 Volts 60 Hz, Amperes - 20 amps.
International 220/240 Volts 50 Hz, Amperes - 10 amps.
- HEPA Filter efficiency: $.3\mu$ @ 99.9%



ICS-DT/TS

Optional Accessories

- Clear Acrylic Cage Divider
- Sliding Shelf Package
- Custom Light Packages

Refer to page 7 for additional options



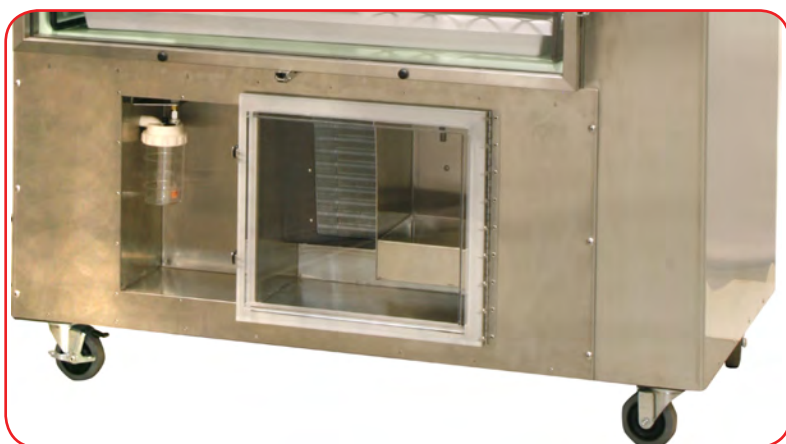
Cage Compartment

1. Solid 1/4" acrylic door sealed between two stainless steel frames.
2. Stainless steel hinge runs the entire length of the door. This provides durability, long life, and assures a tight fitting seal.
3. Examination door enables easy access to the patient without having to disturb the entire cage environment.
4. Oxygen meter and probe.
5. Animal compartment is a seamless, molded fiberglass cage with coved corners for ease of cleaning.
6. Access ports for I.V., E.K.G. and computer interfaces.
7. Animal compartment atmosphere exhaust.
8. Animal compartment atmosphere inlet.



ICS-II/TS

This unit is ideal for use with small hooved animals.



Lower Compartment

1. Nebulizer for dispensing medicants, vaporizes directly into therapy compartment.
2. Humidity sensor.
3. Soda sorb tray for atmosphere purification.

Available Sizes		Width	Depth	Height
ICS-I/TS	Overall	53" 134 cm	30" 76 cm	76" 193 cm
	Animal Area	38" 96 cm	28" 71 cm	33" 83,8 cm
ICS-II/TS	Overall	100" 254 cm	42" 107 cm	46" 117 cm
	Animal Area	65" 165 cm	36" 92 cm	35" 89 cm
ICS-DT/TS	Overall	81.5" 207 cm	33" 83,8 cm	84" 213 cm
	Animal Area	41" 104 cm	28" 71cm	33" 83,8 cm

FIC Ward System

Standard FIC animal cubicles can be mounted together on a stainless steel support frame. This gives the investigator flexibility to house different size animals in the same “Ward”.

They are ideal where space for animal housing is at a premium. Because they are totally enclosed systems, multiple species can be housed in the same room.

Individual filters and outlets can be set up to flow into the house exhaust system.

Units illustrated at left include lower trap “clean out” door, high temperature waste pans, and programmable convection heaters. All standard Ward units include casters with brakes and locks.

Safety features prevent overheating. Both 115-120 volt and 220-240 volt models are available.



FIC Wards System



Programmable convection heater (left) easily mounts on the exterior of the cubicle door using a large thumb knob. Heater is formed of high temperature plastic.

Desired temperatures are set by depressing either “up” or “down” arrow button. The sensor then automatically regulates the internal temperature of the animal cubicle. The internal atmosphere is continually recirculated and treated to maintain your desired temperature.

Stainless steel draft deflectors (right) dissipate warm air exhaust preventing a direct draft in the animal. They also prevent the animal from gaining access to the heater unit itself or escaping during heater cleaning.



Autoclavable Isolation Units (FIC)



FIC-36-4

Autoclavable, or steam sterilizable for Complete Sterilization

FIC units protect your animals and personnel from cross-contamination. They are ideal for both acute and chronic holding of animals.

Units are quiet, warm, and soft to the touch of the animal. The problem of hypothermia is eliminated.

These autoclavable isolation cubicles are matched die molded of hi-tech thermoset plastic. Each cubicle is easily removable from its support frame for sterilization. Polycarbonate doors have slip-a-part hinges making removal for sterilization easy.

All hardware is stainless steel and adjustable to compensate for wear. Casters are non-scuffing with locks, brakes, and zerk fittings. Support frame is stainless steel.

Each compartment includes its own blower, in-line on/off switch and standard glass media filtration package. 120 volts 60 Hz, components are U.L./C.S.A. approved. 220 volt units are available. Standard filtration system has 5µm efficiency.

These isolation units are ideal for the research facility where space is at a premium.

Because each cubicle has its own filtration system, internal atmosphere can be exhausted through your house air removal system. Multiple species can be housed in the same room.

Refer to page 6 & 10 for HEPA filtration options. Refer to page 7 for additional options.

Did You Know?

In the U.S.A. there are about 2,080 work hours in one (1) year? Less considering coffee breaks!



FIC-30-2 front view



FIC-30-2 rear view

The Portable Isolation Unit offers the same features as our autoclavable isolation units with some distinct advantages. The self sufficient environment can be easily transported from surgical suite to the post operative recovery area. The rechargeable battery pack ensures proper heating and ventilation in transport. Battery rated at 130 minutes of continuous use before recharging is necessary. Whether moving your patient across the research facility or across town, the Portable Isolation Unit is the answer.

The autoclavable, or steam sterilizable unit includes a stainless steel top to make a convenient work station.

Portable Isolation Units



FIC-36-1

FIC-30-1

FIC-24-1



FIC-30-1 with battery pack



FIC-30-1 rear view



FIC-30-1/SP with gloves

*H.E.P.A. Filtration
also available!*

Model Number	Cubicle Size (ID) w x d x h	Outside Dimensions (OD) w x d x h	Cubicle Configurations	Possible Species	Approximate Volume	Approximate Shipping Weight
FIC-24	24" x 28" x 28" 61 x 71 x 71 cm	28.5" x 31" x 38.5" 72,4 x 78,7 x 97,8 cm	1, 2, 4, 6	Fowl, Felines, Rabbits	10.8 cu. ft 306 L	130 pounds 59 kilos
FIC-30	30" x 30" x 30" 76 x 76 x 76 cm	35.5 x 33 x 40.5" 88 x 84 x 103 cm	1, 2, 4	Fowl Felines Rabbits Primates	15.6 cu. ft 441 L	155 pounds 70 kilos
FIC-36	36" x 36" x 36" 91,4 x 91,4 x 91,4	40.5 x 39 x 46.5" 102,9 x 99 x 118,1 cm	1, 2, 4	Canines Primates	27 cu. ft 764 L	205 pounds 93 kilos



FIC-30-2/SP

With elevated stainless steel stand.

Standard Glass Media System

Our unique filter plates eliminate the need for tools. This mounting system is standard on all units. Rated @ MERV 4. All filtration components are mounted using the same slip-apart-hinge technique.

H.E.P.A. Filtration System

Our standard mounting technique is used when changing pre-filters and the H.E.P.A. filter itself. Rated at 99.99% @ .3µm.

Other Filtration Methods and Means

Molecular Sieve with Angstroms to suit.

Activated Virgin Carbon.

CO₂ Removal (atmosphere purification).

Possible Applications

- Temporary Conditioning of Control Test Animals
- Drug Abuse Research
- Veterinary Bacteriology and Mycology
- Toxicologic Pathology
- Reproductive (fertility) Studies
- Environment (Hygiene) Exposure
- Nocturnal Studies - Illumination Programmable



Pictured from left to right:

FIC-36-2

FIC-36-4

FIC-36-6

FIC Accessories

- Plastic coated support floor
- Various filtration systems
- Interior shelf packages
- Shelf support package of plastic or metal shelves
- Interior lighting systems
- Feline resting perch
- Reducer to fit your in-house filtration and air-removal system

Additional Options

- A. Glove Ports
- B. Iris Diaphragms
- C. Feeding Ports
- D. Automatic Watering
- E. Tinted (shaded doors)
- F. Shelves
- G. Electric Outlets (inner)
- H. Lighting Systems
- I. Valves, air, gas, water
- J. HEPA Filtration
- K. Access ports. Refer to page 11.

NEW!

Poultry Isolation Chambers

The Plas ■ Labs' goal pertaining to H.E.P.A. filtration of its chambers is to ensure absolute filtration, yet make filter change-over simple and quick. Both the H.E.P.A. filter and blue pre-filters can be changed in seconds.

These poultry isolation units are designed to protect both your fowl and personnel from cross contamination. They are ideal for either acute or chronic studies. The isolation cubicles are match die-molded of "hi-tech" thermoplastic allowing for autoclaving or steam sterilization. The problem of hypothermia is eliminated. Individual cubicles can be removed for cleaning, but it is not normally necessary. The polycarbonate doors are mounted using stainless steel "slip-a-part" hinges for easier cleaning.



Vertical Style Unit with optional glove ports (800-PIU/PORTS) and access port (800-PIU/ACCESS/P.)



Horizontal Style Unit with optional glove ports (800-PIU/PORTS) and access port (800-PIU/ACCESS/P.)

What's included with the standard Poultry Isolation Units:

- Match die-molded animal housings. With autoclavable or steam cleaning capabilities.
- Stainless steel support frame (trolley) with casters, brakes and locks.
- Removable polycarbonate front door with slip-a-part stainless steel hinges.
- High temperature gasket material.
- Electrical control panel can be removed during cleaning.
- Digital temperature controller and thermocouple.
- Red heat lamp with adjustable intensity.
- Gravity fed stainless steel feeder chute and adjustable feed box with sight gauge. Capacity: 6 to 12 pounds. (Depends on size of cubicle)
- Gravity fed adjustable watering "T" with two or three water cups. All stainless steel.
- Fast acting "squeeze" adjuster for the watering "T".
- Stainless steel floor grid.
- Formed white waste pan with rounded corners.
- Lower "trap" door for removing the waste pan. No disruption of the birds.
- Cylindrical H.E.P.A. filters for air make up and exhaust. Allowing for easy and quick filter changing.
- Reusable (hand washable) polyester pre-filters rated MERV 4.
- Squirrel cage blower for air make up or exhaust. Negative pressure standard, but positive pressure is available upon request. Includes an orifice for testing the H.E.P.A. efficiency. "DOP/PAO" testing capable.
- Electrical set-up for either 115-120 or 220-240 volts.
- Standard Plas ■ Labs' 12 month warranty against defective materials and workmanship. (Not the gloves or the filters).

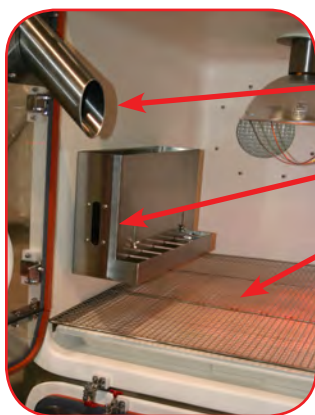
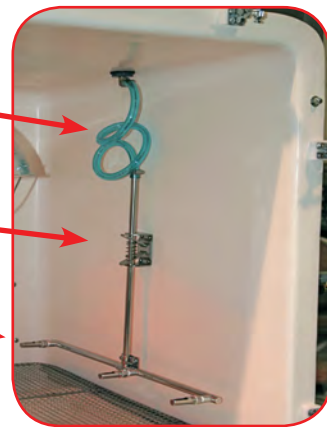


Back view of unit illustrating negative pressure with HEPA filtration.

HOUSING FEEDER & WATERING DETAILS



- New “Coiled” flexible water hose can easily be attached to your house water supply.
- New “Squeeze” adjustment for raising and lowering the water “T” system.
- Stainless steel watering cups and “T” bar.
- Feeder box in lower position. Seated in lower bracket for younger chicks.
- Revised glove port plug, prevents birds for getting into glove port and suffocating.



- Stainless steel feeder chute.
- Stainless steel feed box with sight gauge. (Elevated position).
- Removable stainless steel grid floor.



- Stainless steel feeder chute and removable chute plug.

Optional accessories for the Poultry Isolation Units:

- Ambidextrous white Hypalon gloves. Glove port plugs are included. Plugs prevent birds from entering ports and suffocating. (Catalog: 800-PIU/PORTS)
- Access port for removing sick, injured, or dead birds. (Catalog: 800-PIU/ACCESS/P)
- Interior “anti-escape” shield (polycarbonate).

REMOVABLE WASTE PAN AND LOWER TRAP DOOR

- Each housing cubicle includes a formed white plastic waste pan that is removable without disturbing your birds.
 - The lower trap door is standard, but can be eliminated if the customer prefers.
- Note: This photo illustrates the accessories; 800-PIU/PORTS and 800-PIU/ACCESS/P.**
- New “Sealed” living hinge for lower trap clean-out door.



HEPA FILTER & EXHAUST BLOWER HOUSING DETAILS

- Choose negative or positive pressure set-up. Pressure direction is determined by end-user's requirements.
- Filter housings have stainless steel "slip-a-part" hinges and clamps for easy removal when cleaning.
- Cylindrical H.E.P.A. filters are 8" (203 mm) in diameter. 99.99% @ .3 μ m .
- The blower housing also has the same "slip-a-part" hinge and clamping system.
- Pre-filters are hand washable, three (.5 μ) micron spun polyester.



The thermocouple wire is inserted between the HEPA filter and inner cage wall.




Open clear plastic housing to install the replacement HEPA filter.



The blue "pre-filter" is placed in front of the exhaust HEPA filter. Place pre-filter on the outside of the air make up filter.

REMOVABLE ELECTRIC CONTROL PANEL DETAILS

- All electrical controls are mounted on a stainless steel panel that can be removed in seconds for cleaning the isolation unit. Using our unique "Key Way" technique, no tools are required.
- 
- Two (2) upper "Key Way" slots for mounting or removing control panel.
 - New digital heat control module, #DBS 1000 for upper housing thermocouple. Just push a button and scroll to your desired temperature.
 - Temperature thermocouple. The tip is placed inside the exhaust H.E.P.A. filter housing. Same on the bottom H.E.P.A.
 - Electrical sockets for both the upper heat lamp and blower.
 - Variable speed controls for fans, (blowers).
 - 20 Amp Ground Fault Interrupter (G.F.C.I.). Safety socket. Reset button.
 - Electrical sockets for both the lower heat lamp and the blower.
 - New digital heat control module, #DBS 1000 for lower housing with thermocouple. Just push a button and scroll to your desired temperature.

ADDITIONAL ISOLATOR DETAILS

- All poultry isolator housings feature an interior red heat lamp. This special lamp provides warmth and minimizes healthy birds from attacking injured or sick birds.
- The light intensity (and heat) is controlled by the digital heat controller mounted on the outside of the isolator housing.

Catalog Number	Housing Size	Number of Housings
FIC-30-1-PIU	30" x 30" x 30"	One (1)
FIC-30-2-PIU	30" x 30" x 30"	Two (2)
FIC-30-4-PIU	30" x 30" x 30"	Four (4)
FIC-36-1-PIU	36" x 36" x 36"	One (1)
FIC-36-2-PIU	36" x 36" x 36"	Two (2)
FIC-36-4-PIU	36" x 36" x 36"	Four (4)



USEFUL ISOLATOR ACCESSORIES:

- Catalog **#800-PIU/ACCESS/P**, Access Port constructed of clear acrylic (Perspex) at 9.75" I.D. (248 mm ø) x 9.5" (241 mm) long, with formed clear doors, stainless steel hinges, and adjustable locks. This port is useful for removing sick, injured, or dead birds. It is mounted on top of the upper glove ports and below the lower housing glove ports.
- Catalog **#800-PIU/PORTS**, with Hypalon ambidextrous gloves and ports at 203 mm ø and including one (1) pair of white formed plastic glove port plugs. The plugs prevent birds from entering the glove ports and suffocating.
- New "Sealed" living hinge for lower trap clean-out door.



Did You Know?

The life span of a common chicken is 5 to 8 years. Daily food consumption is approximately 125 to 250 grams per bird, depending upon its size.

Hypoxia Chambers

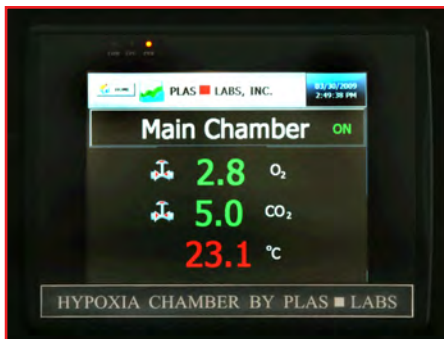
***Ideal for
stem cell work!***

Hypoxia Chambers

The new Hypoxia Chambers are ideal for tissue culture work, including cancer tumor cell and stem cell research. They feature a color operated “touch screen” for automatically controlling oxygen, temperature, and carbon dioxide levels.

Basic Features Include:

- 8” color panel “Touch Screen” display.
- O₂ sensor and CO₂ sensor.
- Platinum RTD with sealing gland.
- N₂, CO₂, and O₂ gas hook-up.
- Inert gas hook-up.
- Ethernet port connection for data-logging.
- Thermoelectric assembly (Peltier device).
- Password protected, configurable PID control.
- One touch, on screen data logging.
- Air circulation fan.



“Touch Screen” display.

Did You Know?

Stem cells can often be induced to differentiate into different cell types?



856-HYPO, Glove Box

Optional perforated shelves are available as an accessory. Part number: FIC-36-S.

Small Animal Hypoxia Chamber is available in three (3) different sizes:

FIC-24-1/HYPO,
24” x 24” x 24”

FIC-30-1/HYPO,
30” x 30” x 30”

FIC-36-1/HYPO,
36” x 36” x 36”

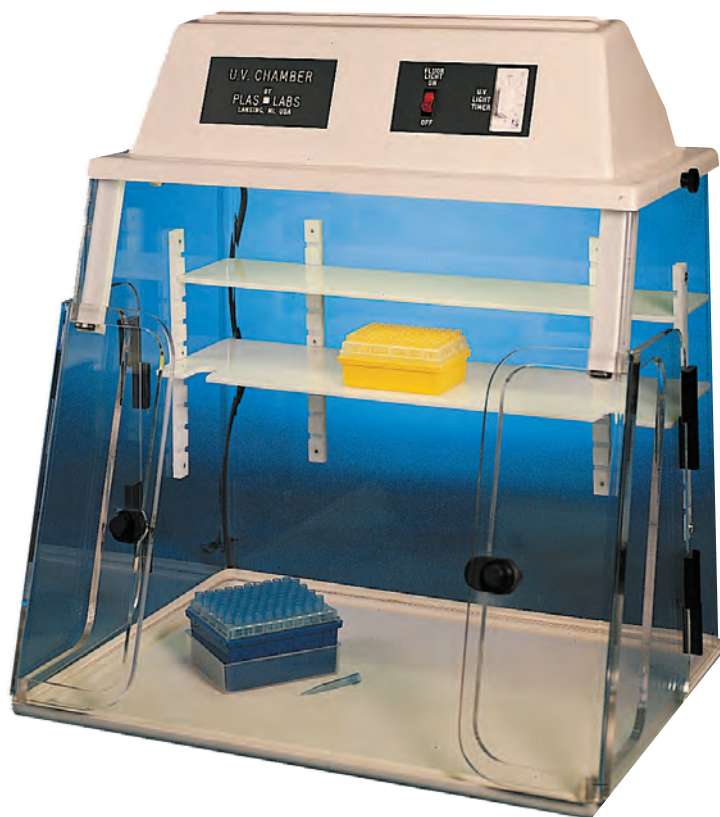


FIC-36-1/HYPO “Small Animal”

Product Specifications

Oxygen (O ₂) range:	0-25%
Oxygen Sensor Accuracy	± 0.25%
Carbon Dioxide (CO ₂) Range	± 0-20%
Carbon Dioxide sensor accuracy	± 0.2%
Temperature Range	ambient to 40°C
Temperature accuracy	± 0.3°C @ 0°C (class B accuracy)
Parameter Control	± 1% or degree of set point

PCR (UV) Chambers



This chamber has been designed to help improve the accuracy of P.C.R. and general Tissue Culture procedures. The chance for air-borne contamination during D.N.A. sequencing is greatly reduced.

The chamber is a “still air enclosure” which contains both our “Bright Light” and U.V. germicidal lamps. The U.V. system is rated at 254 nm and will decontaminate all surfaces of the interior. The lamp should be activated 15 minutes prior to and 15 minutes after planned use.

The front viewing panel is .500 (13 mm) thick optically clear material. It is extremely effective for protection against 32P labeled compounds. It is very effective against Beta Rays **but not Gamma rays.**

Front panel is replaceable. Catalog # 825-UVC (FS)

The doors are removable therefore do not take up valuable laboratory counter workspace. If a corner door is opened, proximity sensors turn off the power to the U.V. System.

825-PCR (UV)

Features for the 825-PCR (UVC) and 825-PCR/UV/Exp Chambers

- Two bright white acrylic shelves are included (5 x 23) & (7 x 23) one is tooled to store pipettors.
- Front panel is .500 (13mm) thick for Beta Ray protection (replaceable catalog # 825-UVC/FS).
- Side access doors are removable.
- Proximity sensors turn off the U.V. system for safety when the door is opened.
- Automatic timer.
- Domestic electric power requirements are 110-115 Volt, 60 Hz. 220 volt units are available.

- The system has a two (2) Amp circuit breaker.
- Sides and back wall are one piece formed of .375 thick acrylic for long term rigidity, durability, and protection.
- Bottom tray has a formed in place spill tray.
- Main housing and top are removable for installation of large pieces of research equipment.
- The U.V. system is rated at 254 nm.
- Crated weight is 80 lbs. (36.5 Kg)
- Standard two (2) year warranty. (Not on UV bulb)

I.D. w x d x h	23.5" x 17" x 21" 597 mm x 432 mm x 530 mm
O.D. w x d x h	24" x 18" x 28" 610 mm x 457 mm x 711 mm
Shipping Weight (Crated)	80 pounds 36.5 kilos

NOTE: If HEPA filtration is preferred, refer to catalog number **#825-PCR/HEPA** illustrated on page 14

Electrical Requirements:

North American 115-120 Volts, 60 Hz. 12 Amps
Export Models 220-240 Volts, 50 Hz. 6 Amps

NEW!

The new HEPA filtered PCR Chamber, catalog #825-PCR/HEPA, includes all of the same basic features as our standard #825-PCR(UV) Chamber, but includes a factory installed HEPA filter system. The HEPA filter system is rated at 99.9997% efficiency at 0.3 μ microns. No tools are required for HEPA filter change over.

This is a positive pressure research chamber. The fan (blower) noise level is rated at less than 40 dBA.

I.D. w x d x h	23.5" x 17" x 21" 597 mm x 432 x 530 mm
O.D. w x d x h	26" x 23" x 28" 610 mm x 457 mm x 711 mm
Shipping Weight (Crated)	80 pounds 36 kilos

825-PCR/HEPA

Additional Features of the basic 825-PCR/HEPA and 825-PCR/HEPA/Exp

- “Bright Light” illumination system (30,000 hour lamp guarantee).
- “Mini-HEPA” filter size 4" x 9.5" x 1" thick (101mm x 240mm x 25.4mm thick). Replacement part MS2199.
- No tools required to change over the HEPA filter.
- Fan (ventilator) noise level is rated at less than 40 dBA.
- Formed in place liquid barrier to facilitate easy clean-up of spills.
- Standard twenty-four (24) month warranty. (Not on consumables, i.e. filter).

Electrical requirements:

North American: 115-120 Volts, 60 Hz. 12 Amps.
Export Models: 220-240 Volts, 50Hz. 6 Amps.



825-PCR/HEPA (Note HEPA on rear wall.)

Primate Chairs



517-CM

Did You Know?

The life span of an average Rhesus Macaque is 20 - 30 years?

Plas ■ Labs has been a leading manufacturer of primate chairs for over 45 years. All of our chairs have been developed, tested, and refined in some of the world's leading research facilities.

Each chair has been developed specifically for a particular species and its physiological structure.

Our chairs offer increased portability, speed of handling, and safety for both the handler and your valuable primate. A choice of two seat styles offers increased comfort in a more natural position for the primate.

These chairs are useful for acute or chronic studies. Rolling support carts enable the researcher to chair the animal in the housing area and safely move it to the lab.

Basic Features on All Chairs

- All surfaces that come in contact with the animal are tooled and highly polished to eliminate chafing and body lesions.
- All restraint plates are adjustable both horizontally and vertically.
- No tools are needed to adjust the chairs.
- Thoracic plates and waste pans are standard on each chair.
- Food bars allow for self-feeding and dietary rewards.
- Casters are anti-scuff with brakes and locks.
- Heavy gauge acrylic (optical quality) offers long run durability and total observation of your animal.
- Large hand knobs afford a good grip when hands are wet and slippery (safety factor).
- No assembly required.

We offer custom fabrication services to manufacture chairs of your own design.

Refer also to our Rotational Primate Chair on page 17.



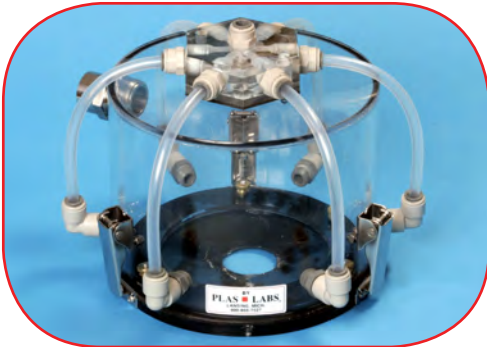
515-SASR

Swing-a-way seat model.



Primate chairs in typical production run.

500-K, Inhalation Helmets



NEW!

Inhalation Helmets useful for the following Plas Labs' primate chairs:

- 514-AG
- 515-SASR
- 517-CYNO
- 518-RPC

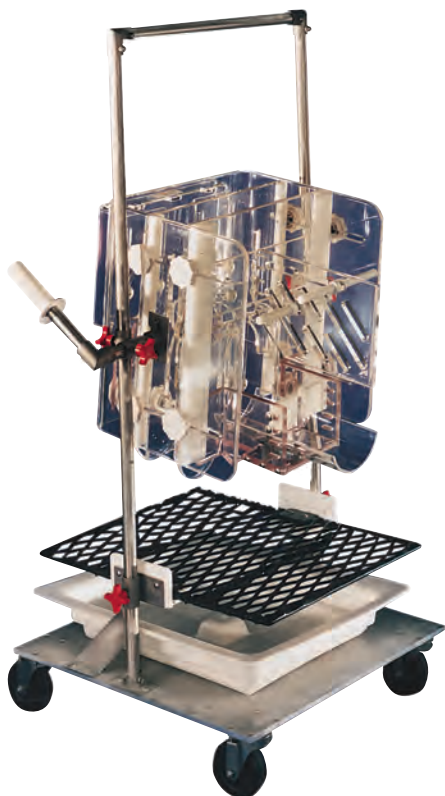
Primate Collar Adapter Plate



Table Top Primate Chair



Rotational Primate Chairs



Rotational Chair, 518-RPC



512-SPC

The next generation of primate chairs offers a diverse application for research capabilities. The restraining portion of the chair rotates a full 360° to position the primate for the individual researchers needs. The ergonomically correct back plate supports the primate in the full range of motion of the chair.

The chair is specifically designed for complete rotational studies of primates, eliminating awkward positions for the laboratory technician.

No tools are required for locking the chair at any angle, which enables the researcher to focus on the task at hand, as opposed to worrying about finding the proper tool to lock the chair into position.

Model Number	Primate Species	Weight Range	Package Includes	Available Accessories
511-SPT 512-SPC	Marmoset Common "Callithrix Jacchus"	500 g to 1 kilo	D	
511-SPT 512-SPC	Squirrel "Saimiri Sciureus"	500 g to 1 kilo	D	
514-AG	African Green "Cercopithecus Aethiops"	1.5 to 4 kilos	B	A, D, F, I, K
515-SASR 518-RPC	Rhesus "Macaca Mulatta"	2.5 to 8 kilos	B, C	A, D, F, I, K
517-CM	Cynomolgus "Macaca Fascicularis"	2.5 to 8 kilos	B, C	A, D, F, I, K
520-BS	Baboon "Papio-Papio"	39 to 61 kilos	B, H	A, H, K

Primate Chair Accessories

- A. 500-A, Watering "T" Bar with bottle holder
- B. 500-B, Adjustable Waste Pan
- C. 500-C, Urine Deflector
- D. 500-D, Table Top Leg Stand

- F. 500-F, Head Restraint Package
- H. 500-H, Safety Enclosure
- I. 500-I, Collar Adapter Accessory
- K. 500-K, Inhalation Helmet

Surgery & Examination Table

NEW!

507-SET

Battery Operated Surgery Exam Tables

Plas ■ Labs now offers a new Battery Operated Surgical-Exam Table. The exam table includes a rechargeable battery pack with a 30-hour service life before recharging is necessary, a stainless steel I.V. bar with turning disc, stainless steel table surface with a height adjustment of 31½" - 45", stainless steel mounting rails with curry clamps and blocks, tilt and turn table surface, unbreakable rolling casters and an ergonomic "X-Shaped" pedestal with foot control.

Part Number	Table Top Dimensions	Animal Weight	Height Adjustment
507-SET	51 x 21.5" 130 x 55 cm	146-165 lbs. 66-75 kg.	min. 83 cm 32.5" max. 123cm 48.5"

The rechargeable battery pack has a 30 hour service life before recharging is necessary. It eliminates bothersome and dangerous electrical cords on the floor.



Table Top:

Stainless Steel with marine rim and liquid duct, 130 x 55 cm with stainless steel mounting rails (all four sides) 130 x 55 cm with four quick release blocks with Curry clamps, with one block holder with turning disc and stainless steel infusion holder.

Height Adjustment:

80-115 cm 31½" - 45"

Load:

<220 pounds (<100 kg)



Foot Switch

The pneumatic foot switch is a security feature of this table. There is no electric current between switch and drive. The column is a closed system, protected from moisture.



Mounting Rail

The mounting rail allows the attachment of various accessories, such as Curry-Clamp quick release blocks and infusion holders.



Tip Turn Mechanism

The Tip/Turn mechanism is easy and safe to handle. All positioning mechanisms function mechanically. The Tip/Turn or Tip mechanism functions on an opening/closing system.

Surgery Equipment

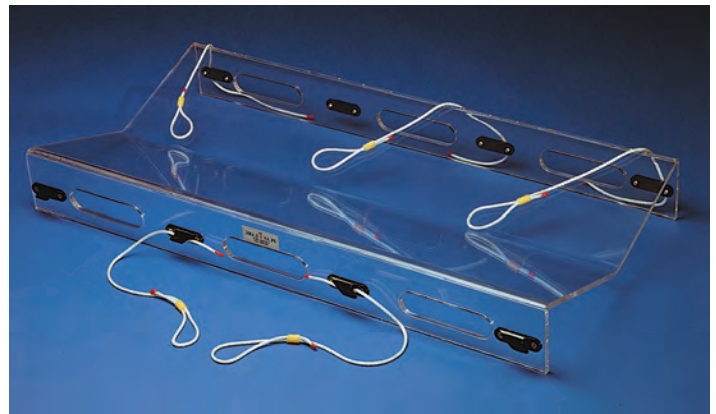


509-RS24, two sizes available: 24" and 30"

Surgery Board Features

- Formed, one-piece construction for long service life and durability.
- Center depressed slope for fast positioning of animal.
- Unique, fast acting tie down cam cleats.
- White, high temperature plastic and nylon components.
- Lightweight and easily portable.
- Uprights adjustable to elevate board for special positioning .
- Five (5) quick-tie, nylon restraint cords .
- Suction cup feet provide a steady work surface(N/A on 509 Series).

Model Number	Product Size	Approximate Animal Size
505-XRAY	36 x 17.5" 914 x 445mm	100 lbs. (45 kgs.)
508-MS	4.5 x 11" 114 x 280mm	up to 9" long
510-SS	8.125 x 16" 206 x 406mm	up to 12" long
509-RS24	12 x 24" 304 x 609 mm	up to 4 kilos
509-RS30	12 x 30" 304 x 762 mm	4 to 7 kilos



505-XRAY, X-Ray Positioner

The positioner is fabricated of .375" thick autoclavable clear polycarbonate. It includes five Nylon restraint cords and fast acting locking cam cleats. Four machined openings on the sides provide excellent non-slip gripping of the device.

The positioner has three (3) uses:

1. An "X-RAY" positioner
2. An actual surgical board
3. A "Gurney" for transporting animals from the surgical suite to the recovery area.



510-SS

508-MS

Anesthesia Chamber

Plas ■ Labs Anesthesia Chambers are available in four (4) standard sizes. Custom sizes are available.

All chambers include heavy duty construction of either smoked transparent acrylic or thermoset plastic (Clear, Smoke, or Black). Refer also to 900-RCS on page 21.

Features Include:

- Stainless Steel Hardware.
- Removable False Floor.
- Two (2) Gas Nipples or Gas Valves on our larger units.
- Closed Cellular Gasketing.



903-EC with optional oxygen analyzer 800-OA

Model Number	Suggested Animal	Interior Size w x d x h	Color	Volume
901-EC	Small Rodents	12 x 12 x 12"	Transp. Grey	28 liters
902-EC	Large Rodents	18 x 18 x 18"	Transp. Grey	95 liters
903-EC	Rabbits Felines, Small Canines	36 x 20 x 24"	Transp. Grey	224 liters
904-EC*	Felines Canines	28 x 24 x 28"	White Thermoset Plastic	264 liters

* 904-EC is similar to FIC-24-1 on page 6

Did You Know?
One (1) cubic foot is equal to
28.3 Liters in volume?



903-EC with Gas Absorption System

903-EC shown with optional gas absorption system (800-DT/SS)

Applications

- Hibernation Studies.
- Euthanasia.
- Nebulizing Chamber.
- Air Pollution Studies.
- Special Gas Atmospheres.

Optional Accessories

- Oxygen Analyzer.
- Stainless Steel Floor.
- CO2 Absorption System with pump.
- Ground Key Cock Valves (N2, Air, Vac, Etc.).

Rodent Containment System

Simple to Use and Inexpensive for the Budget
Minded Investigator.



900-RCS

This is the only available unit which can be used as a free flow or sealed system.

Our chamber may be used as an open or closed system. If an open system (free flow of air) is desired, align the holes on the top cone with the main clear cylinder. If not, realign the holes to affect the closed system. Once realigned, simply tape the top and the bottom to the main cylinder.

Accommodates mice, rats, gerbils, hamsters, and guinea pig sized animals. This inexpensive containment system is extremely useful for acute or chronic studies.

Applications

- Metabolism Studies
- CO₂ Collection
- Inhalation Work
- Euthanasia Chamber
- Isolation Requirements
- Anesthesia Techniques

System Includes:

- Two molded convex cones.
- One molded concave top for alternative watering technique.
- Clear cylindrical main housing.
- Two gas nipples (1/8 x 1/4 NPT hose barb style)
- One roll of vinyl sealant tape.
- Metal tripod stand.
- Stainless steel floor grid.
- Fecal / urinary separator.

Did You Know?

For most liquids, one (1) ounce is equal to thirty (30) ml. in volume?

Model Number	Suggested Animal	Interior Size	Color	Volume
900-RCS Standard	Small Rodent(s)	7.75" diam. ID 8" height	Clear Cylinder	7.5 liters
900-RCL Large	Large Rodent(s)	10.75 diam. ID 9" height	Clear Cylinder	13.5 liters



900-10, "J" Feeder

*In use for over
45 years!*

Rodent Equipment

Broome Style Restrainers

This is perhaps the most effective style available for three basic reasons;

1. Ease of use and access to the rodent.
2. Prevention of the animal's ability to turn.
3. Safety for the animal handler.

Flat Bottom Restrainers

These convenient restrainers have been a research standard for over forty years. The adjustable tail stock can be inserted into any one of four positions. Apertures in the top and bottom provide easy access for injections or sampling. The pocket and holes in the front make it easy to anesthetize or feed the animal. Refer to page 23.

Rodent Injection Cone

This device is relatively new on the research scene. It is extremely useful for large quantity sampling where high speed and efficiency are required. It is completely transparent, durable, and easy to clean, suction cup feet offer a secure work device. Refer to page 23.

See Also:

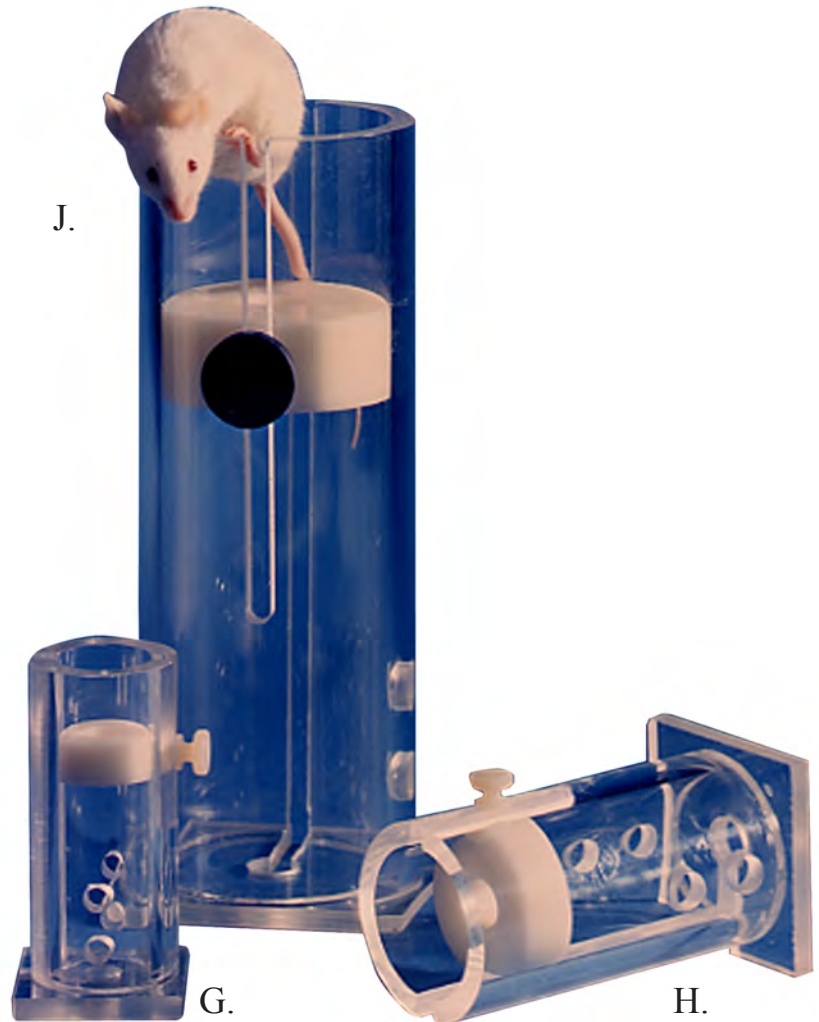
562-IRC, Illuminated Tail Injection Cone on page 25

Surgery Boards

Plas Labs surgery boards are formed of one piece high-temp Noryl™ for durability and ease of cleaning. Five adjustable Nylon cords are included. (Refer also to Page 19)

***“Slip Into Something
Comfortable!”***

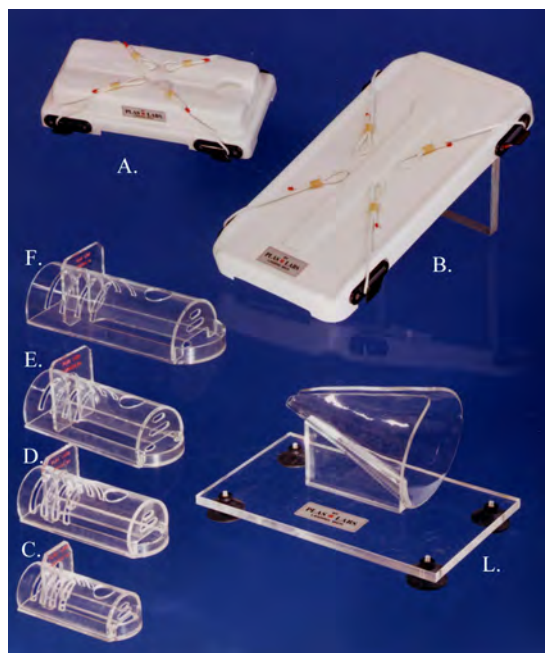
J.



550-Series Broome Style Restrainers

Also, refer to our new illuminated rodent cone, part number 562-IRC, on page 25





Rodent Equipment

Photo Key	Model Number	Item	Product Size	Animal Range
A.	508-MS	Surgery Board	4.5 x 11"	up to 9" long
B.	510-SS	Surgery Board	8.125 x 16"	up to 12" long
C. D. E. F.	541-RR 542-RR 543-RR 544-RR	Flat Bottom Rodent Restrainer	1.5" diam. x 3.75" 2" diam. x 5" 2.5" diam. x 6" 3.25" diam. x 8"	15 to 30 g 30 to 125 g 125 to 250 g 250 to 500 g
G. H. I. J. K.	551-BSRR 552-BSRR 553-BSRR 554-BSRR 555-BSRR	Broome Style Rodent Restrainer	1" diam. x 3.75" 1.5" diam. x 5.5" 2" diam. x 8" 2.5" diam. x 8.5" 3.5" diam. x 9"	15 to 30 g 30 to 125 g 125 to 250 g 250 to 500 g 500 to 800 g
L.	561-RC	Injection Cone	5.75" long x 5" high x 4" opening	Mice: 15 to 30 g Rats: 500 to 600 g

All rodent restrainers are manufactured from clear materials to provide complete visual awareness of the state of your animal. We offer two styles of restrainers in four convenient sizes.

**A special Broome Style unit for obesity studies, The Zucker Unit, is also offered.
Catalog # 555-BSRR (Not illustrated).**

Insertion Sequence

To place the animal in the Broome Style Restrainer, loosen and remove the nose piece and grasp the animal by the tail. Slide the animal's tail along the longer open groove until the animal is completely in the cylinder. Slide the nose piece into the short groove on the opposite side of the restrainer and place it up to the nose of the animal to ensure a snug fit.

This restrainer is perfect for injections or blood sampling.

Also, refer to our new illuminated rodent cone, part number 562-IRC, on page 25



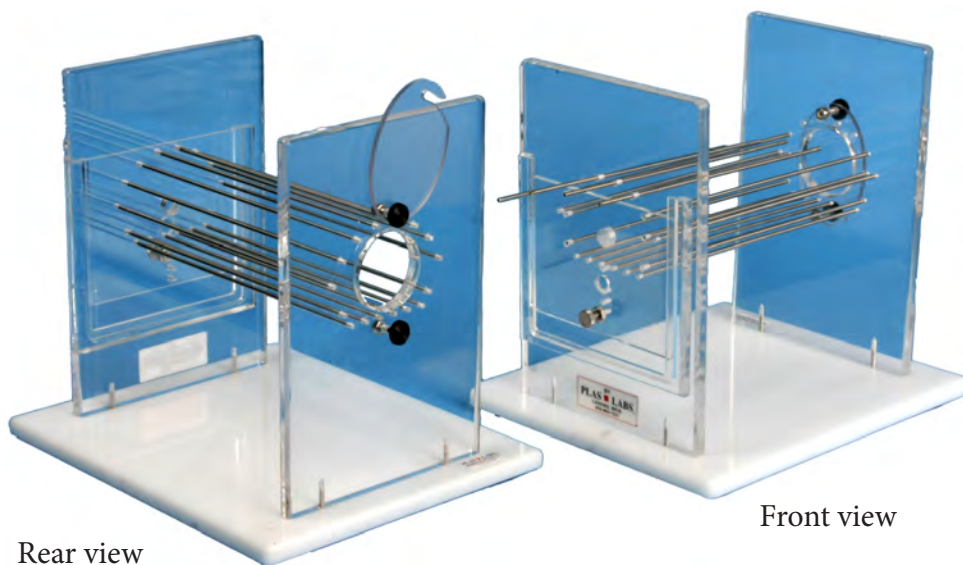
550-Series Insertion Sequence

Bowman Style Rodent Restrainer

The PLAS ■ LABS 530-POR, Bowman Style Rodent Restrainer has been re-engineered and refined to accommodate larger sized animals up to 750 grams. The positions of the stainless steel rods around the rodent provide easy access for many types of research applications, especially obesity studies.

The rodent can quickly be inserted into the restrainer by removing several stainless steel upper rods, or through an access port hole in the rear upright. The access port hole features a polycarbonate locking door to prevent escape.

The front “guillotine” door can be adjusted and locked by using any one (1) of three (3) adjustment positions. The door has a stainless steel “spring loaded” lock. Suction cup feet on the white plastic base secure the device during use.



530-POR

Product Specifications

- Weight Range: 250 up to 750 grams.
- Maximum length of the rodent compartment is 9" (228 mm).
- Eighteen (18) stainless steel rods are adjustable up to 3.5" ø (89 mm)
- Rear access port opening is 2" ø (50.8 mm). The polycarbonate locking door is attached by a “nylock” fastener to prevent future operational loss.
- Overall height is 11" (279 mm).
- Base size is 10" x 12" (254 mm x 305 mm).
- Basic unit is constructed of .500" (12.7 mm) jeweled acrylic.
- Suction cup feet included for stability.



Close-up of rear locking door to prevent escape.



Door in the upper position locks the stainless rods in place.

Illuminated Tail Vein Unit

NEW!



PLAS ■ LABS now offers an “Illuminated Rodent Tail Vein Injection Cone”. The new 562-IRC features our “Bright Light” illumination system with rechargeable batteries and recharge unit, clear plastic tail insertion cone, formed white base with suction cup “non-slip” feet, housing batteries, on/off switch, lights, and an electrical plug for recharging the batteries (100-240 VAC capacity.)

What's Included with the 562-IRC:

- Clear plastic tail insertion cone.
- Formed white plastic base containing batteries, “on / off” switch, and lights.
- Base used for recharging batteries. Two (2) included with system.
- Electrical plug for recharging batteries. (100 to 240 Volt capacity.)

562-IRC

Catalog Number:	562-IRC
Cone Dimensions:	5.75” long x 5” high x 4” opening
Total Footprint Size:	8.5” x 10” (216mm x 254mm)
Light bulb warranty:	30,000 hours
Animal Weight Range:	Mice: 15 to 30 grams Rats: 500 to 600 grams



562-IRC “On”



562-IRC “Off”

Rabbit Equipment

“The only thing that wiggles is the nose!”

Plas ■ Labs Rabbit Restrainers are clearly the best. They provide total observation of your valuable research animal.

All Rabbit equipment was originally developed in the early 1970's in research labs under actual research conditions.

We were the first to use clear acrylic materials to protect and safeguard your animals. Eliminates or minimizes back injuries.

Refer to animal weight ranges on page 27



503-XL, 502-AR, and 501-TC (top to bottom)

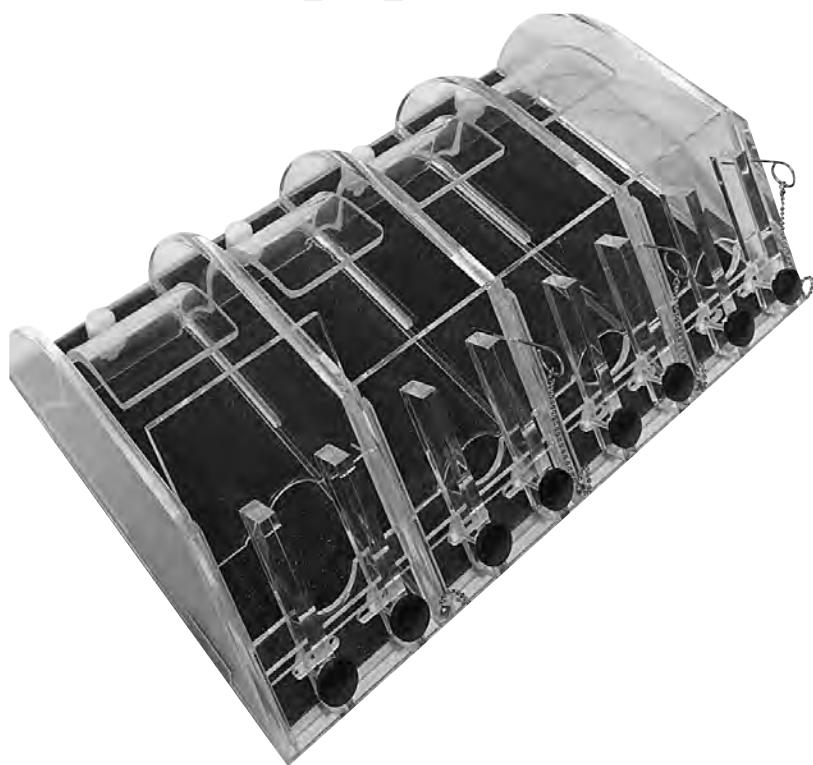


502-AR in an Ophthalmological Study

Basic Rabbit Restraint Features

- Highly polished edges prevent chafing, especially at the neck.
- Non-slip surface provides better footing and helps to calm animal. This is much safer and easier on the animal's foot pads.
- Clear acrylic aids in retaining body warmth. Hypothermia is eliminated.
- Unique curved back butt plate minimizes the risk of back injury. The plate is anatomically correct.
- Vertical head bars are adjustable and easily removable if not needed.
- Rear access hole for pyrogen testing (N/A on 501-TC).
- Stainless steel pin offers several fine adjustment points for neck plate.
- Unit can be sanitized in a cage washer up to 180 degrees F° (82°C) or sterilized chemically.
- Non-slip base pads ensure unit stability.

Rabbit Equipment



504-PT-4

Catalog Number	Description
504-PT	Multiple Stall Rabbit Restrainers (No head bars or butt plates)
504-PT-2	(Two Stalls)
504-PT-4	(Four Stalls)
504-PT-6	(Six Stalls)
504-PT-8	(Eight Stalls)
506-MS	Multiple Stall Rabbit Restrainers (with head bars and butt plates)
506-MS-2	(Two Stalls)
506-MS-4	(Four Stalls)
506-MS-6	(Six Stalls)
506-MS-8	(Eight Stalls)

Model Number	Item	Product Size w x d x h	Animal Weight Range
501-TC	Rabbit Restrainer	6 x 24 x 5" 15 x 61 x 13 cm	4 to 7 kilos
502-AR	Rabbit Restrainer	6 x 18 x 6" 15 x 45 x 15 cm	up to 4 kilos
503-XL	Rabbit Restrainer	6 x 22 x 6.5" 15 x 56 x 17 cm	4 to 7 kilos
505-XRAY	X-Ray Positioner refer to page 19	18 x 36 x 4" 46 x 91 x 10 cm	up to 7 kilos
506-MS	Multi-Stall Rabbit Restrainer	size depends upon number of stalls required	up to 4 kilos per stall



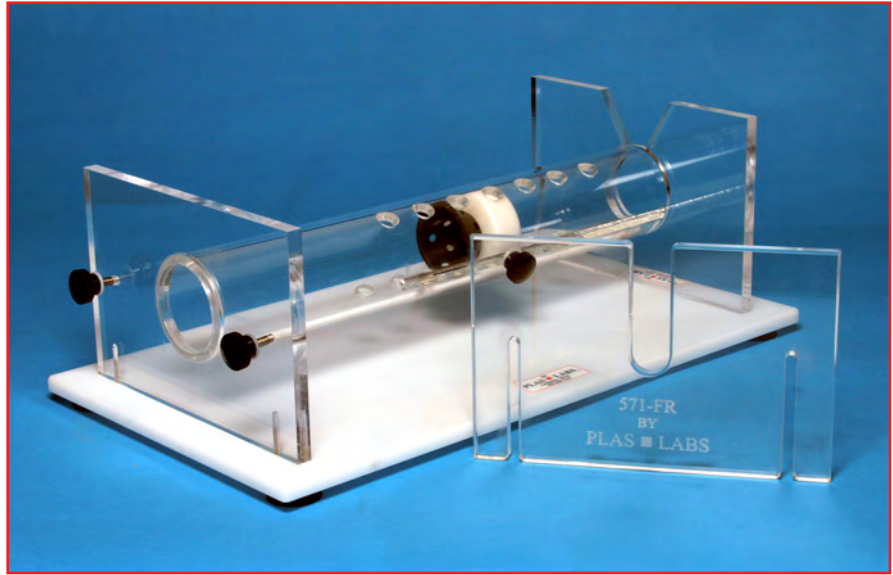
CART-RR, Support Cart for Rabbit Restrainers

CART-RR, Stainless Steel support cart accommodates up to four rabbit restrainers. Includes non-scurf casters with brakes and locks. Cart size: 34" wide x 36" deep x 36" high
865mm x 915mm x 915mm

Ferret Restrainers

The Plas Labs' Ferret Restrainer is a modified version of a similar device initially described by Dr. Daniel McLain in the Volume #35, No. 7 issue of *Lab Animal Magazine*.®

The Plas Labs' units are offered in four (4) sizes taking into consideration the animals age, weight, and sex. The units are constructed of optical quality clear acrylic (Perspex), and a formed black plastic nose cone with an Acetal locking slide. The main restraining cylinder can be rotated 360° to provide complete access to the animal. All units are mounted on a white acrylic base plate with suction cup feet to guarantee reliable stability during testing procedures. Counter top space required is 11.5" x 21". (292 x 534mm)



571-FR

Catalog Number	Dimensions	Animal Weight Range
571-FR	64 mm ID x 18" long	400 to 700 grams
572-FR	79 mm ID x 18" long	650 to 1,000 grams
573-FR	88 mm ID x 18" long	1,000 to 1,700 grams
574-FR	101 mm ID x 18" long	1,500 to 2,000 grams

SCIENTIFIC NAME

Mustela putorius furo

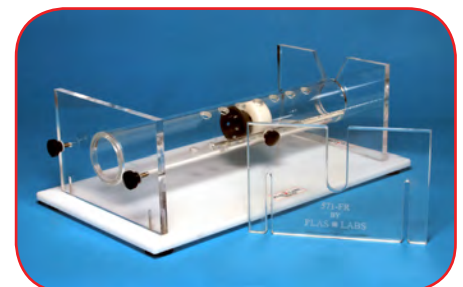
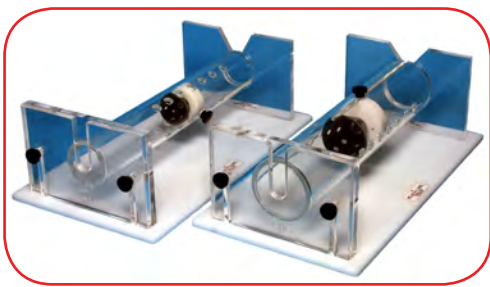
Taxonomy:

PHYLUM: Chordata

CLASS: Mammalia

ORDER: Carnivora

FAMILY: Mustelidae



Ferret Restrainer Features:

Suction cup feet on all four (4) corners.

Rear tailgate securing knobs. Two (2) typical on each unit.

Nose cones can slide out to remove ferret.

Cylinder rotates to use access holes.

Nose cones with securing knobs. (Breathing holes)

Guinea Pig Restrainers

(*Cavia porcellus*)

NEW!

These clear acrylic restrainers provide complete visual awareness and status of your valuable animal. The plastic is warm to the touch and eliminates the problem of hypothermia.

Included with each restrainer are adjustable head restraint bars, an adjustable back “butt” plate, a stainless steel locking adjustment pin for the neck stock (three [3] positions), and an adjustable formed back support to minimize broken backs.

Also included is a non-slip floor material to provide secure animal footing and calm the animal.

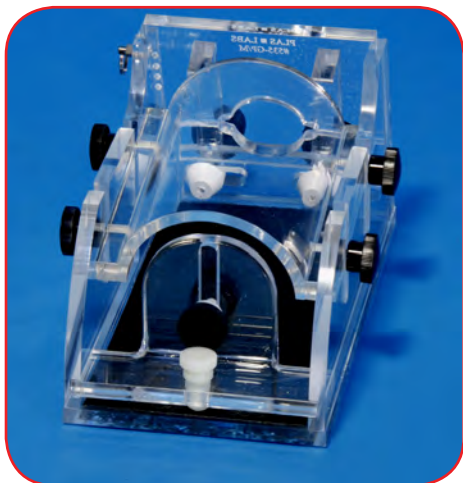
If required, specific (custom) modifications are available.



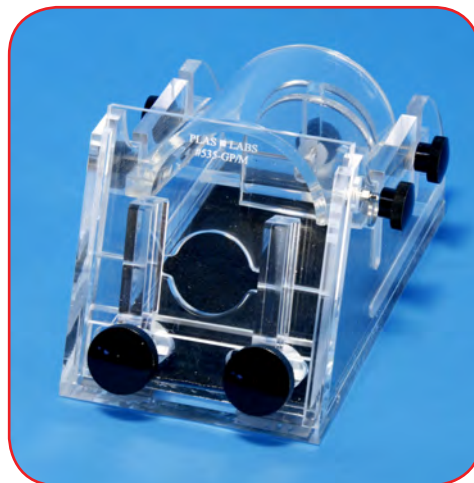
535-GP/M

535-GP/S

Catalog Number	Animal Age	Dimensions	Animal Weight Range
535-GP/S	5 weeks old	10cm x 17.75cm long	300-350 grams
535-GP/M	10 weeks old	11.1cm x 20.5cm long	500-600 grams



Close-up for rear butt plate.



Close-up of front. NOTE: Locking pin and head positioning bars.



Side view. NOTE: Black adjustable knobs for back plate.

Anaerobic Chambers

The #855-AC (Anaerobic Chamber) has been designed for manually controlling your atmosphere when working with Oxygen sensitive materials. It is perfect for working in situations requiring low levels of Oxygen during critical isolation of the operator or your research materials. Any inert gas may be used.

Its main advantage is minimizing the risk of Oxygen entry into the main working chamber. If trace amounts of Oxygen happen to enter the main chamber, the Catalyst Heater reduces it to water vapor. The drying train can then be activated to remove any excess water vapor.

The #855-AC is offered as a complete system ready to use. There are no other components required. All you need to add are your work samples and gas of choice.



855-AC, Manually Controlled Anaerobic Chamber

Product Data	855-AC	855-ACB	Simplicity-888 (Automatic) (Refer to page 31)
I.D.	41" w x 28" d x 26" h 1,040mm x 710mm x 660mm	60" w x 38" d x 31" h 1,520mm x 960mm x 790mm	41" w x 28" d x 26" h 1,040mm x 710mm x 660mm
O.D. (width includes transfer chamber)	55" w x 35" d x 38" h 1,400mm x 890mm x 970mm	11.1cm x 20.5cm long 1,930mm x 1,190mm x 1,070mm	55" w x 35" d x 38" h 1,400mm x 890mm x 970mm

Features & Benefits

- Standard 24 month warranty (Not gloves or consumables.)
- Formed one-piece clear plastic top section with "Easy Clean" corners.
- Matched die molded white thermoset bottom with "Easy Clean" corners.
- Two vacuum diaphragm pumps, one each for the drying train and the transfer chamber (purging).
- Drying train includes three (3) clear plastic canisters filled with Molecular Sieve™.
- All controls are illuminated.
- "Bright Light" system (40,000 hour lamp guarantee).
- White ambidextrous Hypalon™ gloves.
- All clamps are adjustable to compensate for wear.
- Four (4) ground key cock valves for purging.
- Electrical outlet (socket) strip (UL, CSA, & CE).
- Self sealing quick disconnects allow changing of the drying train without disturbing the internal atmosphere.



855-ACB, Multiple Operator Anaerobic Chamber

Anaerobic Chambers, Automatic

This chamber has been designed for automatic atmosphere control when working with Oxygen sensitive materials, product containment needs, and/or general isolation control. The chamber features an internal “PLC” control system with multifunctional operator interface.

This glove box is perfect for working in anaerobic conditions.

Features & Benefits:

- Internal “PLC” control system.
- Three (3) drying train canisters filled with Molecular Sieve™ and quick dis-connects.
- White ambidextrous Hypalon™ gloves.
- “Bright Light” system (40,000 hour lamp guarantee).
- Programmable Catalyst Heater unit with two (2) Palladium (Pd) filled canisters.
- Multiple electric outlet (socket) strip. UL, CSA, and CE approved.
- Two (2) ground key cock valves for purging the main chamber.
- Standard 24 month warranty (Not gloves or consumables.)



Simplicity-888, Automatic Anaerobic Chamber

The operator can program these features:

- The number of purging cycles.
- Gas selection (inert or anaerobic blend).
- Drying train reaction time frame.
- Pressure “hold” function.
- Anaerobic gas reaction time frame.
- Selection of chamber to be purged (Main or transfer).



“PLC” Control Board

The operator interface continually displays the “PLC” functions and working pressures within the main chamber or transfer chamber. It can also support an additional 4-20 mAmp analog input. These inputs are used to create your own unique atmosphere chamber.

*Did You Know?
Plas-Labs has a new
containment unit that guarantees
a containment level of
<1 ng/m³ “API’s”*



800-HEATER & Palladium

The programmable Catalyst Heater has two basic functions. It reduces trace amounts of Oxygen that enter the main chamber and it maintains incubation temperatures from ambient up to 42 degrees C.



PLAS ■ LABS

Good training is essential to prepare for future business opportunities. Visit us and gain the knowledge and confidence to prepare you for success when selling our products.

Our training facility can accommodate up to six people at a time, and a typical training session takes about two days. PLAS ■ LABS™ pays all hotel and meal expenses during that time.



**We produce equipment that
helps you produce results.**

- Anaerobic Chambers
- Cadaver / Prosection Trays
- Tissue Culture Hoods
- Desiccators
- Hypoxia Chambers
- Ferret Equipment
- Guinea Pig Units
- Dust-Free Hoods
- Demonstration Hoods
- Controlled Atmosphere Chambers
- Guinea Pig Housing Units
- Isolation Chambers
- Custom Fabrication
- Intensive Care Units
- Oxygen Therapy Units
- Rabbit Restainers
- Rodent Restainers
- Primate Chairs
- Small Animal Surgery Boards
- Gnotobiotic Isolators
- Glove Boxes
- Metabolism Chambers
- Euthanasia Chambers
- Balance Chambers
- Animal "Ward" Housing Units
- Poultry Isolators
- Illuminated Tail View Units

TM

PLAS ■ LABS

Innovated Quality Since 1967



LabConsulting.at
Our global network for your success

LabConsulting.at
Zum Anningerblick 10
2331 Vösendorf, Austria

☎ +43(0)1-244 28 55
✉ info@labconsulting.at
🌐 www.labconsulting.at