

THE RIGHT LIGHT

# WESTAR

ECL Substrates for Western blotting

07

**TECHNICAL DESCRIPTION**

**WESTAR** is our product line of ECL HRP substrates for Western blotting.

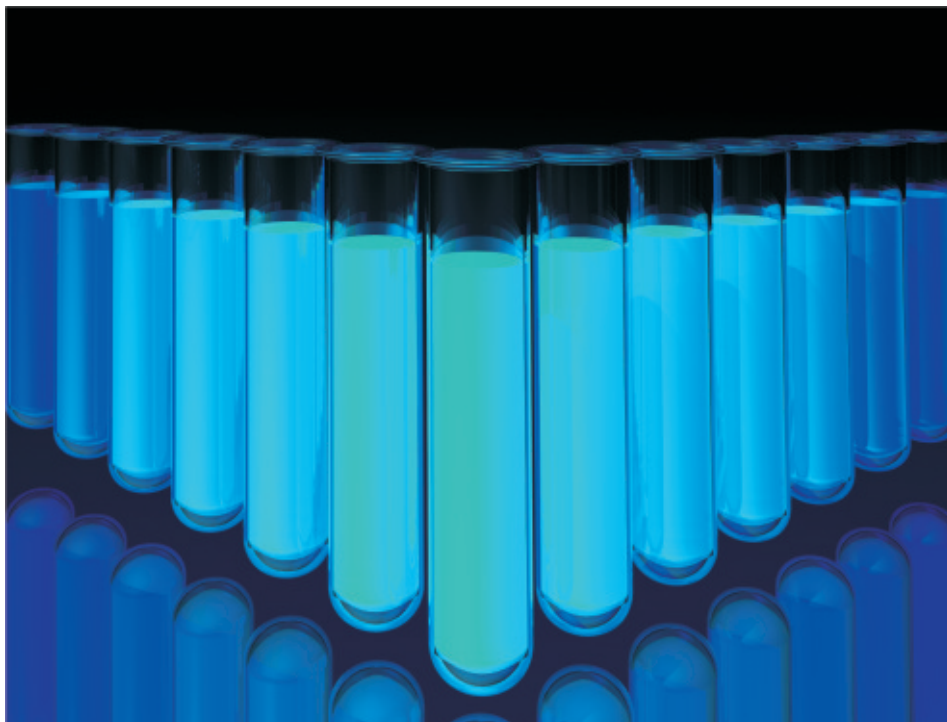
Our double enhancer proprietary technology allows for modulation of signal intensity and signal duration.

Each WESTAR substrate is at the top of its respective market segment regarding performance/price ratio.

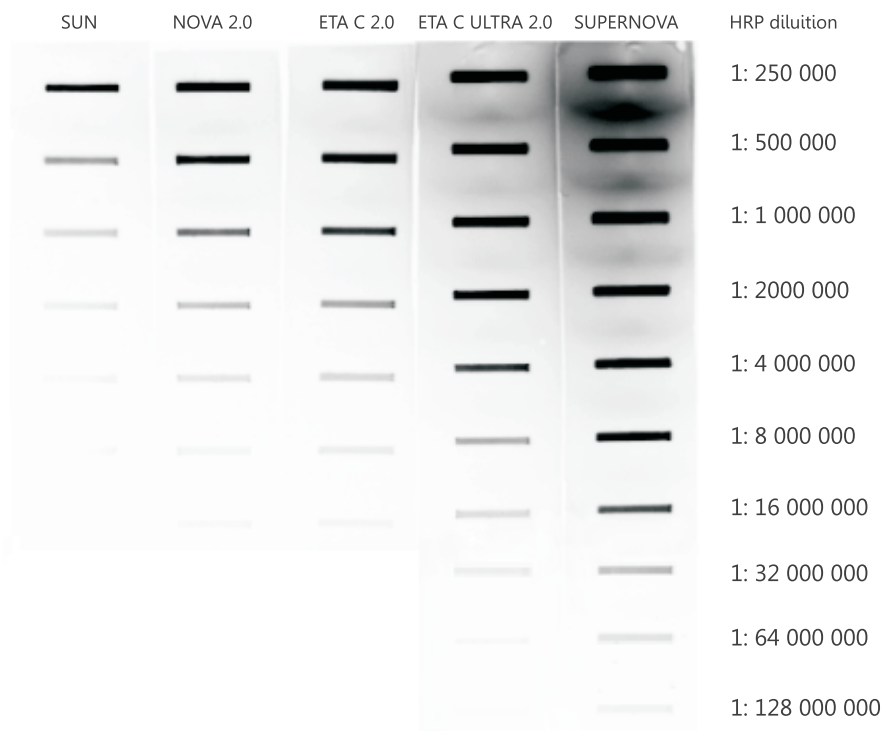
**FEATURES**

All WESTAR substrates are:

- compatible with all chemiluminescence imagers and X-ray film detection
- well-suited for different types of membranes and blocking reagents as well as a wide range of antibody dilutions
- optimized for attaining low background and high signal-to-noise ratio



## CHOOSE YOUR SUBSTRATE AMONG 5 DIFFERENT LEVELS OF SENSITIVITY



Detection of HRP-antibody conjugate two fold dilution series using slot blot technique.  
 Five different HRP ECL substrates (Cyanagen) were used.  
 Imager: Westar R (Hi Tech Cyanagen). Exposure time 1 minute.

## WESTAR ECL SUBSTRATES FOR WESTERN BLOTTING



Product	<p><b>SUN</b> Cat XLS063,250</p>	<p><b>NOVA 2.0</b> cod. XLS071,0250</p>
Competitors	<p>AMERSHAM™ ECL™ GE HEALTHCARE</p> <p>AMERSHAM™ ECL™ START GE HEALTHCARE</p> <p>PIERCE™ ECL THERMO SCIENTIFIC™</p> <p>LUMINATA™ CLASSICO MILLIPORE™</p>	<p>SUPERSIGNAL™ WEST PICO THERMO SCIENTIFIC™</p> <p>LITEABLOT® PLUS EUROCLONE</p> <p>LUMINATA™ CLASSICO MILLIPORE™</p> <p>WESTERN LIGHTNING™ PLUS PERKINELMER</p>

**ETA C 2.0**  
cod. XLS070,0250

**ETA C ULTRA 2.0**  
cod. XLS075,0100

**SUPERVOVA**  
cod. XLS3,0100

CLARITY™  
BIO-RAD

PIERCE™ ECL™ PLUS  
THERMO SCIENTIFIC™

LITEABLOT® EXTEND  
EUROCLONE

SUPERSIGNAL™ WEST DURA  
THERMO SCIENTIFIC™

LUMINATA™ CRESCENDO  
MILLIPORE™

ECL™ PRIME  
GE HEALTHCARE

SUPERSIGNAL™ WEST DURA  
THERMO SCIENTIFIC™

LITEABLOT® EXTEND  
EUROCLONE

LUMINATA™ FORTE  
MILLIPORE™

IMMOBILON™  
MILLIPORE™

WESTERN LIGHTNING PRO  
PERKINELMER

ECL™ SELECT  
GE HEALTHCARE

SUPERSIGNAL™ WEST FEMTO  
THERMO SCIENTIFIC™

LITEABLOT® TURBO  
EUROCLONE

WESTERN LIGHTNING ULTRA  
PERKINELMER

## TECHNICAL DESCRIPTION

**WESTAR SUN** is our entry level ECL substrate with stable light output for mid-picogram detection level. The formulation provides a low background for a high signal to noise ratio.

Antibody dilution range:

- primary antibody  
[1:100; 1:5,000]
- secondary antibody  
[1:1,000; 1:15,000]

## FEATURES

Mid-picogram detection

Long signal duration

Working solution stable  
for at least five days

An entry level ECL substrate with  
excellent performance/price ratio

## COMPARISON WITH COMPETITORS



SUN – Cyanagen



Pierce™ ECL™ – Thermo Scientific™



Amersham™ ECL™ – GE Healthcare



Amersham™ ECL™ start – GE Healthcare

Western blotting detection of MAP kinase (ERK 1/2)  
Imager: Westar R (Hi Tech Cyanagen)

product	cat #	size	Cat #
WESTAR SUN	XLS063,0250	2 x 125 mL	

## TECHNICAL DESCRIPTION

**WESTAR NOVA 2.0** is an ECL substrate with stable light output for low-picogram detection level.

The formulation provides a low background for a high signal to noise ratio.

Antibody dilution range:

- primary antibody  
[1:500; 1:5,000]
- secondary antibody  
[1:20,000; 1:100,000]

## FEATURES

Low-picogram detection

Long signal duration

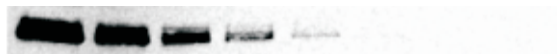
Working solution stable for at least three days

The best entry level ECL substrate on the market

## COMPARISON WITH COMPETITORS



NOVA 2.0 – Cyanagen



SuperSignal™ West PICO - Thermo Scientific™



Luminata™ Classico - Millipore™



Amersham™ ECL™ – GE Healthcare

Western blotting detection of MAP kinase (ERK 1/2)  
Imager: Westar R (Hi Tech Cyanagen)

product	cat #	size	Cat #
<b>WESTAR NOVA 2.0</b>	XLS071,0250	2 x 125 mL	

## ETA C 2.0

### TECHNICAL DESCRIPTION

**WESTAR ETA C 2.0** is an ECL substrate with stable light output for mid-femtogram detection level. The formulation provides a low background for a high signal to noise ratio.

Antibody dilution range:

- primary antibody  
[1:1000; 1:15,000]
- secondary antibody  
[1:25,000; 1:150,000]

### FEATURES

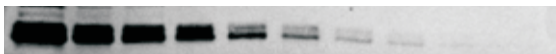
Mid-femtogram detection

Long signal duration

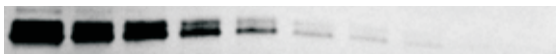
Working solution stable for at least three days

Low background with high signal to noise ratio

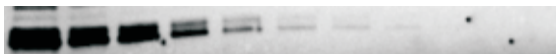
### COMPARISON WITH COMPETITORS



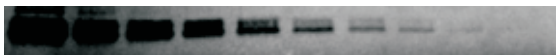
ETA C 2.0 – Cyanagen



Clarity™ – Bio-Rad



Luminata™ Crescendo - Millipore™



SuperSignal™ West Dura - Thermo Scientific™

Western blotting detection of MAP kinase (ERK 1/2)  
Imager: Westar R (Hi Tech Cyanagen)

product	cat #	size	Cat #
WESTAR ETA C 2.0	XLS070,0250	2 x 125 mL	

## TECHNICAL DESCRIPTION

**WESTAR ETA C ULTRA 2.0** is an ECL substrate with stable light output for mid to low femtogram detection level. The perfect ECL substrate for applications requiring very high signal intensity and a long signal duration.

Antibody dilution range:

- primary antibody  
[1:5000; 1:50,000]
- secondary antibody  
[1:50,000; 1:250,000]

## FEATURES

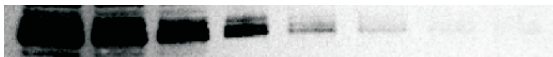
Mid to low femtogram detection

The best compromise between high signal intensity and a very long signal duration

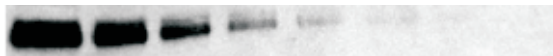
A value-priced top performer

Working solution stable for at least three days

## COMPARISON WITH COMPETITORS



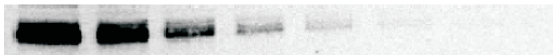
ETA C ULTRA 2.0 – Cyanagen



SuperSignal™ West Dura - Thermo Scientific™



Luminata™ Forte - Millipore™



Amersham™ ECL™ Prime™ – GE Healthcare

Western blotting detection of MAP kinase (ERK 1/2)  
Imager: Westar R (Hi Tech Cyanagen)

product	cat #	size	Cat #
WESTAR ETA C ULTRA 2.0	XLS075,0100	2 x 50 mL	

# SUPERNOVA

## TECHNICAL DESCRIPTION

**WESTAR SUPERNOVA** is our top performance product with an extremely high signal intensity and stable light output for low-femtogram detection level. The formulation provides a low background for a high signal to noise ratio.

Antibody dilution range:

- primary antibody  
[1:5000; 1:100,000]
- secondary antibody  
[1:100,000; 1:500,000]

## FEATURES

Low-femtogram detection

The ECL substrate with the highest signal on the market

Working solution stable for at least three days

Low antibody consumption to save you money

## COMPARISON WITH COMPETITORS



SUPERNOVA – Cyanagen



SuperSignal™ West Femto - Thermo Scientific™



Amersham™ ECL™ Select™ – GE Healthcare

Western blotting detection of MAP kinase (ERK 1/2)  
Imager: Westar R (Hi Tech Cyanagen)

product	cat #	size	Cat #
WESTAR SUPERNOVA	XLS3,0100	2 x 50 mL	

## OTHER PRODUCTS

**ELISTAR**

Cyanagen's line of HRP ECL substrates for ELISA covers a wide range of signal intensity

**ELISTAR SUN**

standard signal intensity

**ELISTAR NOVA**

medium signal intensity

**ELISTAR ETA C 2.0**

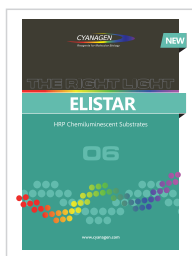
high signal intensity

**ELISTAR ETA C ULTRA 2.0**

very high signal intensity

**ELISTAR SUPERNOVA**

extreme signal intensity

**RUBY**

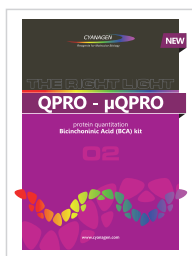
A fluorescent reagent for rapid and sensitive in-gel staining of proteins for optimal visualization and quantitation.

**GREEN STAIN**

A safe, easy-to-use and sensitive tool for detection of nucleic acids in agarose and polyacrylamide gel.

**QPRO and  $\mu$ QPRO**

Cyanagen's Protein Quantitation line includes QPRO and  $\mu$ QPRO, BCA-based protein quantitation assays.

**CHROMIS**

Cyanagen provides a broad range of fluorescent dyes for various applications. The line of dyes covers a wide spectrum from 400 to 800 nm.

**WESTAR R**

A compact, value priced and high quality chemiluminescence reader sold by Hi Tech Cyanagen.

**RENEW**

A ready-to-use stripping buffer for Western blotting. A perfect solution to quickly remove antibodies from nitrocellulose and PVDF membrane.



**Cyanagen**

Is a biotech company located in Bologna, dedicated to research, development and production of reagents for molecular biology since 2003. Currently Cyanagen is one of the leading companies in the field of reagents for Western blotting and ELISA.

The main product lines are focused on chemiluminescence and fluorescent dyes for biological analysis, genomics, proteomics and chemical sensors.

Our products are based on Cyanagen internationally patented technologies and achieve outstanding performance in terms of sensitivity and stability.

The products are extremely versatile and perfectly suited to the latest analytical instrumentation. These products are also available as OEM.



**CYANAGEN**  
*Reagents for Molecular Biology*

Cyanagen s.r.l.  
Via Stradelli Guelfi, 40/C  
40138 Bologna (ITALY)

T +39 051 534063  
info@cyanagen.com  
www.cyanagen.com

# WESTAR

Cyanagen srl has a certified Quality System

ISO 9001:2008 QUALITY CERTIFIED



07

[www.cyanagen.com](http://www.cyanagen.com)